

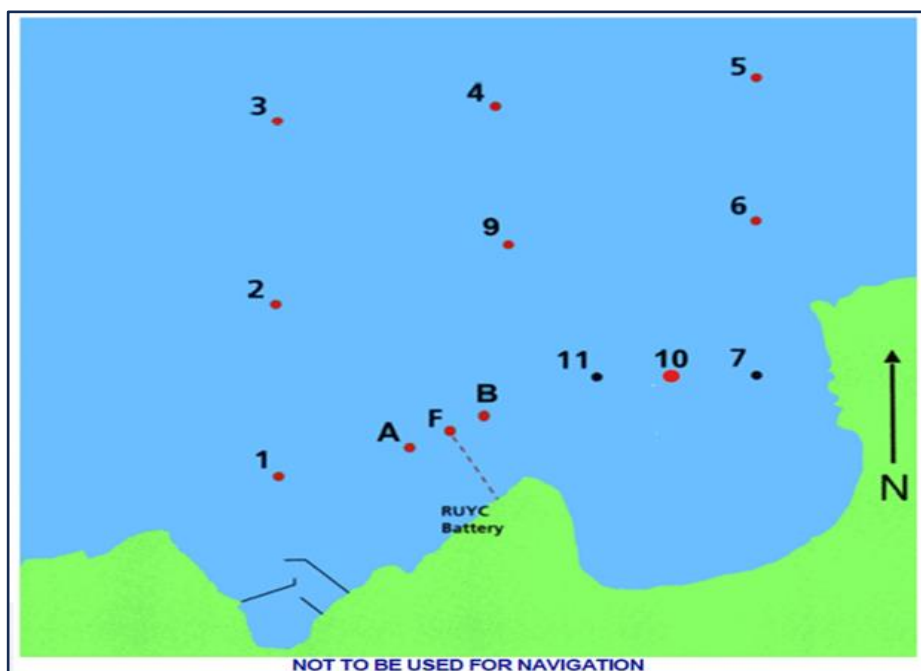
## Royal Ulster Yacht Club

### Sailing Instructions

**Thursday Evening RBCA Club Racing 2024 Season  
2<sup>nd</sup> May – 5<sup>th</sup> September 2024**

**PLEASE NOTE:**

**Competitors should read SI 4.3 and be aware that Code Flag W may be displayed for Committee Boat starts**



**IMPORTANT**

Competitors are reminded that the 2021-2024 RRS have significantly increased the importance of the Notice of Race (NoR), which now contains rules that rank the same as the Sailing Instructions (SIs). A number of rules that had previously been shown within the SIs will now be found in the NoR as they form part of the information that competitors may need before deciding whether or not to race. They are not necessarily repeated in the SIs.

Copies of the Notice of Race may be downloaded from the RUYC website at:  
[www.ruyc.uk/sailing/](http://www.ruyc.uk/sailing/)

**RULES and CLASSES**

Racing will be governed by the rules as defined in *The Racing Rules of Sailing*, the RYA Prescriptions, and the appropriate class rules. Cruiser handicap classes will sail IRC and/or YTC and a copy of their appropriate valid certificates shall be lodged with the Honorary Sailing Secretary. The Whitesail Class will have results calculated under the YTC system.

**2 STARTING TIMES, CLASS FLAGS AND STARTING PROCEDURE**

Signals will be made at three-minute intervals. After the first preparatory signal flag 'P' shall be left displayed until the last Class starts and the hoisting of the Class code flag will be the preparatory signal for that Class and the warning signal for the next Class.

In amendment of RRS 26 the start times and procedure will be as follows:

	<b>Class Flag</b>	<b>Thursdays</b>
Warning Signal		19:00
Preparatory Signal		19:03
IRC 1 (IRC $\geq$ 0.970) & YTC Unrestricted	1	19:06
Whitesail	3	19:09
IRC 2 (IRC $<$ 0.970)	Q	19:12
ILCA 7 & ILCA 5	5	19:15
ILCA 4 & Topper	J	19:18
Large Dinghy (PY < 1200)	R	19:21
Multihulls	F	19:24

**3 IDENTIFICATION**

Class flags shall be displayed from or near the back stay on IRC 1, IRC 2, YTC, Sigma 33 and Whitesail Cruisers.

**4 COURSES**

4.1 In amendment of RRS 27.1, the course for each class will be displayed with, or as soon as possible after the preparatory signal for that class. The course to be sailed will be displayed on numeral boards displayed on the front wall of the battery. These boards will have either RED or GREEN backgrounds indicating how the marks are to be rounded (leaving them to port or to starboard, respectively). Second and subsequent rounds may be sailed and will be displayed as above when the leading boats approach the finish of the previous round(s).

4.2 Two buoys ('A' & 'B') will be laid to the South-West and North-East, respectively, of the red starting line buoy and approximately in line with that buoy. The buoys 'A' and 'B' have no significance when starting. At the end of a round, or when Finishing, the Start/Finish line shall be crossed only in the direction that it was crossed when starting. When crossing the Start/Finish Line West to East marks 'A' and 'B' shall be left to Port. When crossing the Start/Finish Line East to West marks 'B' and 'A' shall be left to starboard.

When a boat finishes (in accordance with the definition) the second of the two buoys ('A' or 'B', as appropriate) no longer has a required side.

4.3 When code flag W is displayed at the Marina and the RUYC Battery, this will indicate a Committee Boat start from Mark 9. If no flag is displayed, the starts will be from RUYC Battery.

4.4 When code flag W is displayed on the Committee Boat, the start line will be between Mark 9 and a Committee Boat positioned off Mark 9, displaying a pole with an orange flag. The start line will be between Mark 9 and the pole. The Warning Signal, Preparatory Signal etc. for each class will be signal flags. The signals will be repeated on RUYC Battery. Sound signals will be made on the Committee Boat.

4.5 The number of the first mark to be rounded after the start line will be displayed on a board on the Committee Boat; this will be a board similar to the Battery Boards, indicating a Port or Starboard rounding. After rounding this mark, boats will cross the Finish Line. Marks A & B will be marks of the course, and A, B & F will be left to the same hand as the first mark, Port or Starboard. On passing through the finish line, the Course for Round 2, and any subsequent rounds, will be displayed on the Battery Wall.

4.6 The Committee Boat will be a mark of the course for the Start only when code flag W is displayed. It will not be on station after the Start Sequence has concluded.

## 5 **STARTING LINE**

The Starting Line will be between a red buoy (shown as 'F' in the diagram) and a white pole with an X topmark in front of the battery.

## 6 **STARTING TIME LIMIT**

A boat that does not start within 6 minutes after her starting signal will be scored Did Not Start without a hearing. This changes RRS A5.1 and A5.2.

## 7 **FINISHING**

The finishing signal shall be Flag 'S' displayed on its own if all Classes are to finish, or with Class Flags if only the Classes designated by those flags are to finish. In amendment to RRS 32.2 sound signals will not normally be made when displaying this signal.

The Finishing Line will be between a red buoy (shown as 'F' in the diagram) and a white pole with an X topmark in front of the battery.

## 8 **RE-CROSSING THE FINISHING LINE**

Boats that have already finished shall not re-cross the finishing line.

## 9 **GENERAL RECALLS**

In amendment of RRS 26 and 29.2, a Class subject to a general recall shall take as its preparatory signal the lowering of the Class flag for the last Class shown in SI 2. If a second or subsequent Class is subject to a general recall its preparatory signal will be the lowering of the Class flag of the preceding recalled Class.

## 10 **TIME LIMITS**

The time limit will be 21:30 during May, June and July and 21:00 in August and September. In amendment to RRS 35, if a boat in any class finishes within the time limit, the time limit will be extended by ½ hour for all other boats in that class. If the final round is not completed within the time limit by the leading boat of a class, the finishing time of the penultimate round of that class will be taken and points awarded accordingly.

## 11 **PROTESTS**

Protests shall be lodged with the Race Officer or Honorary Sailing Secretary on the prescribed form within 1 hour of the finishing time of the boat or boats involved.

## 12 **Safety**

The attention of competitors is drawn to the requirements of RRS 1.2 and 40.1 in respect of personal flotation devices. In amendment of RRS 40.1 all persons in the Multihull and all dinghy classes shall wear personal flotation devices at all times while afloat.

## 13 **SERIES and DISCARDS**

The Early Season Series will run from 4<sup>th</sup> May to 29<sup>th</sup> June (9 races). The Late Season Series will run from 13<sup>th</sup> July to 7<sup>th</sup> September (9 races). The Overall Series will run from 4<sup>th</sup> May to 7<sup>th</sup> September (18 races). In any series there will be no discard if fewer than 4 races are sailed and 2 discards if 8 or more races are sailed, 3 discards if 12 or more races are sailed and 4 discards if 18 races are sailed. RRS A5.3 will apply.

14 **INSURANCE**

Each participating boat shall be insured with valid third-party liability insurance with a minimum cover of £3,000,000.

15 **LIKENESS**

By participating in one or more of the events described I grant to the Royal Ulster Yacht Club the right in perpetuity to make, use and show, from time to time at their discretion, any motion or still pictures of me without compensation.

16 **RISK STATEMENT**

Rule 3 of the Racing Rules of Sailing states: "The responsibility for a boat's decision to participate in a race or to continue to race is hers alone." Sailing by its nature is an unpredictable sport and therefore inherently involves an element of risk. By taking part in the event, each competitor agrees and acknowledges that:

- (a) They are aware of the inherent element of risk involved in the sport and accept responsibility for the exposure of themselves, their crew and their boat to such inherent risk whilst taking part in the event;
- (b) They are responsible for the safety of themselves, their crew, their boat and their other property whether afloat or ashore;
- (c) They accept responsibility for any injury, damage or loss to the extent caused, by their own actions or omissions;
- (d) Their boat is in good order, equipped to sail in the event and they are fit to participate;
- (e) The provision of a race management team, patrol boats and other officials and volunteers by the event organiser does not relieve them of their own responsibilities;
- (f) The provision of patrol boat cover is limited to such assistance, particularly in extreme weather conditions, as can be practically provided in the circumstances.