



Spring Series 2026

SAILING INSTRUCTIONS

Royal Ulster Yacht Club



SAILING INSTRUCTIONS

The Organising Authority (OA) is Royal Ulster Yacht Club (RUYC)

The notation [NP] in a rule means that a boat may not protest another boat for breaking that rule. This changes RRS 60.1.

1. RULES

- 1.1. As per NoR 1.

2. CHANGES TO SAILING INSTRUCTIONS

- 2.1. Any change to the SIs will be posted online and also at Bangor Marina at least two hours before the scheduled start of the race, except that any change to the schedule will be posted by 20:00 on the day before it will take effect.

3. COMMUNICATIONS WITH COMPETITORS

- 3.1. Notices to competitors will be posted on the official notice board which is [online here](#) and when possible duplicated on the noticeboard in Bangor Marina.

4. CODE OF CONDUCT

- 4.1. [DP] Competitors and support persons shall comply with reasonable requests from race officials and all official volunteers.

5. SIGNALS MADE ASHORE

- 5.1. Signals made ashore will be displayed from the flagpole at the top of the access ramp at Bangor Marina and will also be displayed from the Royal Ulster Yacht Club (RUYC) battery.
- 5.2. When flag 'AP' is displayed ashore, '1 minute' is replaced by 'not less than 60 minutes' in Race Signals AP.

6. SCHEDULE OF RACES

- 6.1. As per NoR 9.
- 6.2. An additional race may be run on any day at the discretion of the race committee. To indicate this intention the finish boat or RUYC Battery will display flag Numeral 3 at the end of the last scheduled race on any day.
- 6.3. To alert boats that a race or sequence of races will begin soon, an orange flag will be displayed with one sound signal at least 5 minutes before a warning signal is made.

7. CLASS FLAGS

- 7.1. Class flags will be:
- 7.2. IRC & YTC Unrestricted sail Class 1 IRC \geq 0.970 Numeral Pennant 1
IRC & YTC Unrestricted sail Class 2 IRC \leq 0.969 Numeral Pennant 2
Sail Restricted (whitesail) Numeral Pennant 3

8. RACING AREAS



8.1. As per NoR 12.

9. THE COURSES

9.1. Windward/leeward courses will be used. The diagrams in Appendix A show the courses, including the order in which marks are to be passed, and the side on which each mark is to be left.

9.2. Boats can sail through the start / finish line whilst racing the course.

10. MARKS

10.1. Marks 1, 2, 3 will be yellow inflatables. The start/finish mark will be a green inflatable.

10.2. Coastal race marks are listed in Appendix A.

10.3. If code flag T is displayed at Bangor Marina then the marks will be those defined in 2025 Thursday Night Slis.

11. OBSTRUCTIONS

11.1. Official boats, including a safety boat in close attendance to a craft or competitor in difficulty, are designated as an obstruction.

11.2. Those vessels competing at the Irish Sailing Association Youth Nationals on Sunday 12th April 2026 will be considered as “vessels with limited ability to manoeuvre” and all competitors must give way.

11.3. The courses in Belfast Lough hosting the Irish Sailing Association Youth Nationals on Sunday 12th April 2026 will be considered obstructions.

11.4. Any boat, who in the opinion of the OA, enters a course hosting the Irish Sailing Association Youth Nationals on Sunday 12th April 2026 will be scored DSQ without redress (this cannot be protested by another competitor).

11.5. Following the finish all boats must keep clear of the courses hosting the Irish Sailing Association Youth Nationals on Sunday 12th April 2026.

12. THE START

12.1. The starting line will be between a staff on a committee vessel displaying an orange flag at the starboard end and the course side of the green inflatable start mark.

12.2. A boat that does not start within 5 minutes after her starting signal will be scored Did Not Start without a hearing. This changes RRS A5.1 and A5.2.

12.3. [DP] Boats whose warning signal has not been made shall avoid the starting area during the starting sequence for other races.

12.4. For the Round the Lough and RUYC Club mark course the starting line will be the between the transit of the white pillar with a white “X” in front of the Battery and the white mast behind the Battery and a red buoy at the approximate outer limit (outer end).



13. CHANGE OF THE NEXT LEG OF THE COURSE

- 13.1. To change the next leg of the course, the race committee will move the original mark (or the finishing line) to a new position.
- 13.2. Minor Course changes may not be signalled, this changes RRS 33.

14. THE FINISH

- 14.1. The finishing line will be between a staff displaying a blue flag on a committee vessel and the course side of the finish mark.
- 14.2. For any race sailed under code flag T the finishing line will be as that defined in the 2025 Thursday Night SIs (these can be found at [RUYC sailing's webpage](#)).
- 14.3. On a coastal race, the finish will be at a mark specified by the Race Committee prior to the start. It will be the responsibility of the boat to record their finish by taking a photograph of an instrument / device recording their location and time and a photograph of the mark as your boat passes it. These images are to be forwarded to sailingsecretary@ruyc.uk as soon as possible after finishing.

15. PENALTY SYSTEM

- 15.1. As per NoR 14.

16. TIME LIMITS

- 16.1. On race days where W/L courses, or club mark courses, are being sailed, boats failing to finish within a 20-minute finishing window after the first boat in her class sails the course and finishes will be scored Did Not Finish (DNF) without a hearing. This changes RRS 35, A5.1, A5.2
- 16.2. On race day where coastal course is being sailed, boats failing to finish within a 60-minute finishing window after the first boat in her class sails the course and finishes will be scored Did Not Finish (DNF) without a hearing. This changes RRS 35, A5.1, A5.2

17. HEARING REQUESTS

- 17.1. The protest time limit is 90 minutes after the last boat has finished the last race of the day or the race committee signals no more racing today, whichever is later. This changes RRS 60.3(b) and 61.4(b). The time will be posted on the ONB
- 17.2. Receipt of Hearing Request forms shall be acknowledged and lodged in a folder behind the Front Bar at RUYC.
- 17.3. The protest time limits and hearing times will be posted on the RUYC Skippers WhatsApp group chat and posted on the Club information board in the club foyer.

18. SCORING

- 18.1. As per NoR 15.

19. SAFETY REGULATIONS

- 19.1. [DP] A boat that retires from a race shall notify the race committee as soon as possible.



20. REPLACEMENT OF CREW OR EQUIPMENT

20.1. Does not apply.

21. EQUIPMENT AND MEASUREMENT CHECKS

21.1. [NP] A boat or equipment may be inspected at any time for compliance with the class rules, notice of race and sailing instructions.

22. SUPPLIED BOATS

22.1. Does not apply.

23. OFFICIAL VESSELS

23.1. Official vessels will be identified at briefing

24. [DP] [NP] SUPPORT PERSON VESSELS

24.1. As per NoR 16

25. TRASH DISPOSAL

25.1. Trash must be retained and disposed of upon return to shore.

26. BERTHING

26.1. Does not apply.

27. HAUL-OUT RESTRICTIONS

27.1. Does not apply.

28. DIVING EQUIPMENT AND PLASTIC POOLS

28.1. Does not apply.

29. PRIZES

29.1. As per NoR 24.

30. RISK STATEMENT

30.1. As per NoR 22.

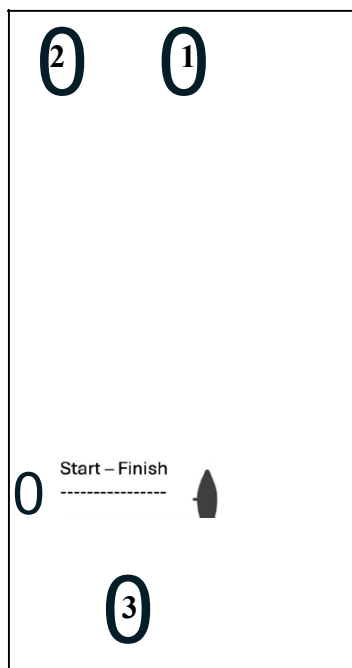
31. INSURANCE

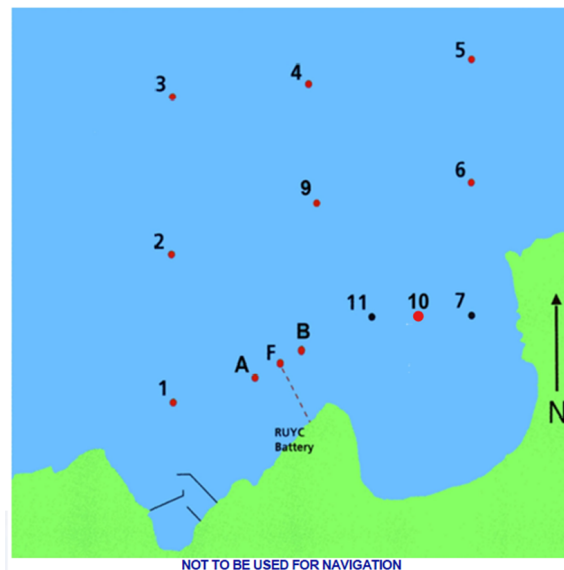
31.1. As per NoR 23.



Appendix A – Course Diagrams

| |
|---|
| COURSE 1 |
| for |
| IRC & YTC Unrestricted Sail – ONLY |
| START – 1 – 2 – 3 – START – 1 – 2 – 3 – START – 1 – 2 – 3 – FINISH |
| (3 LAPS) |
| COURSE 2 |
| for |
| White Sail Restricted – ONLY |
| START – 1 – 2 – 3 – START – 1 – 2 – 3 – FINISH |
| (2 LAPS) |





Round the Lough

Courses will be set on the day of the race and indicated at the battery.

The marks that may be used for the races in the **Round The Lough Race** (only) are as follows:

| Number | <u>Mark</u> | <u>Description</u> |
|---------------|-----------------------|--|
| 1 | RUYC No.1 | Red Spherical Buoy to the north of the Long Hole, Bangor |
| 2 | South Briggs | North Cardinal Buoy |
| 3 | RUYC No. 3 | Red Spherical Buoy approx. 1 nautical mile to the north of the Long Hole, Bangor |
| 4 | Kilroot Buoy | Green Pillar Buoy |
| 5 | Helens Bay Buoy | Red Pillar Buoy |
| 6 | Carrick A | Red inflatable Buoy WSW of Kilroot Power Station |
| 7 | RUYC No. 7 | Black Spherical Buoy, just west of Ballymacormick Point, Bangor |
| 8 | Rockport Special Mark | Yellow Buoy with a yellow X top mark located approx. north of Rockport pumping station |
| 9 | RUYC No. 11 | Black Spherical Buoy, NE of Lukes Point, Bangor |
| 10 | RUYC No. 5 | Red spherical buoy approximately 0.5 nautical mile north of Ballymacormick Buoy. |